



مستشفى الملك فيصل التخصصي ومركز الأبحاث
King Faisal Specialist Hospital & Research Centre
Gen. Org. مؤسسة عامة
Jeddah Branch - فرع جدة

MAGNET
RECOGNIZED



AMERICAN NURSES
CREDENTIALING CENTER

C807-Paired Concurrent: Nursing Interventions to Improve Patient Care

From Research to Bedside Practice: The Crescent of Care Nursing Model

**King Faisal Specialist Hospital & Research Center Jeddah,
Kingdom of Saudi Arabia**

**2018 ANCC National Magnet Conference®
Thursday, October 25, 8:00–9:00 a.m.**

***Sandy Lovering, DHSc RN, CTN-A, FAAN, Executive Director, Nursing Affairs
Alanoud Abualsaud, MScN RN, Head Nurse, 5South Medical Unit***



Objectives

- * Describe the application of the Crescent of Care nursing model (COCM©) within the Professional Practice Model (PPM)
- * Describe the multi-educational interventions and resources to disseminate and apply the COCM © at macro-(hospital) and micro (unit) levels
- * Describe the evaluation of education strategy and embedding the COCM© within the PPM.

The presenters for this presentation have disclosed no conflict of interest related to this topic.



King Faisal Specialist Hospital & Research Centre (Gen. Org.) - Jeddah, Saudi Arabia

- One hospital of the KFSH&RC General Organization, Ministry of Health, KSA
- 385** Bed Tertiary Specialist Hospital serving the needs of the community in the Western Region of Saudi Arabia
 - Patients are **93% Saudi & 7% Expatriates**
 - Average Daily Census: **290**
 - Length of Stay: **6.33**
 - Procedures: **21987**
 - Outpatient Visits: **332,626**
 - Nurses: More than **25 Nationalities**

2017 Statistics



2002



2004



2004



2012



2007



2013 & 2018





مستشفى الملك فيصل التخصصي ومركز الأبحاث
King Faisal Specialist Hospital & Research Centre
Gen. Org. مؤسسة عامة
فرع جدة - Jeddah Branch



Crescent of Care Model (COCM©)



Loving 2008



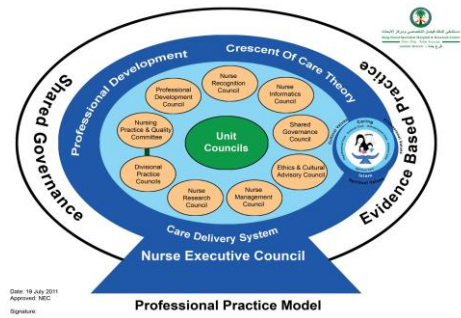
Values impacting on care

- **Spiritual values:** values derived from Islam
- **Cultural values:** beliefs from the Arab Muslim worldview
- **Professional values:** arising from the profession

Components of care

- Spiritual care
- Cultural care
- Psycho-social care
- Interpersonal care
- Clinical care

- * **Focus of Care:** Patient and family
- * **Aim:** To restore the patients' physical, psychological, social and spiritual well being.



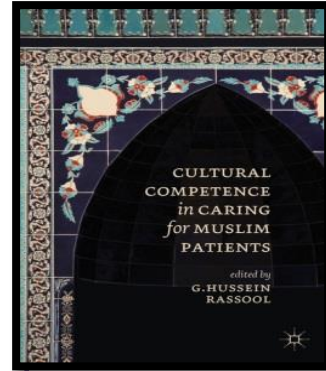
2008

ARAB MUSLIM NURSES CARING RESEARCH

KFSHRC NURSES CHOOSE COCM

- Professional Practice Model
- Model Development

2009 - 2011



RESOURCE DEVELOPMENT

- Publications
- COCM website
- Posters

2011 - Present

KFSHRC MODEL IMPLEMENTATION & EVALUATION



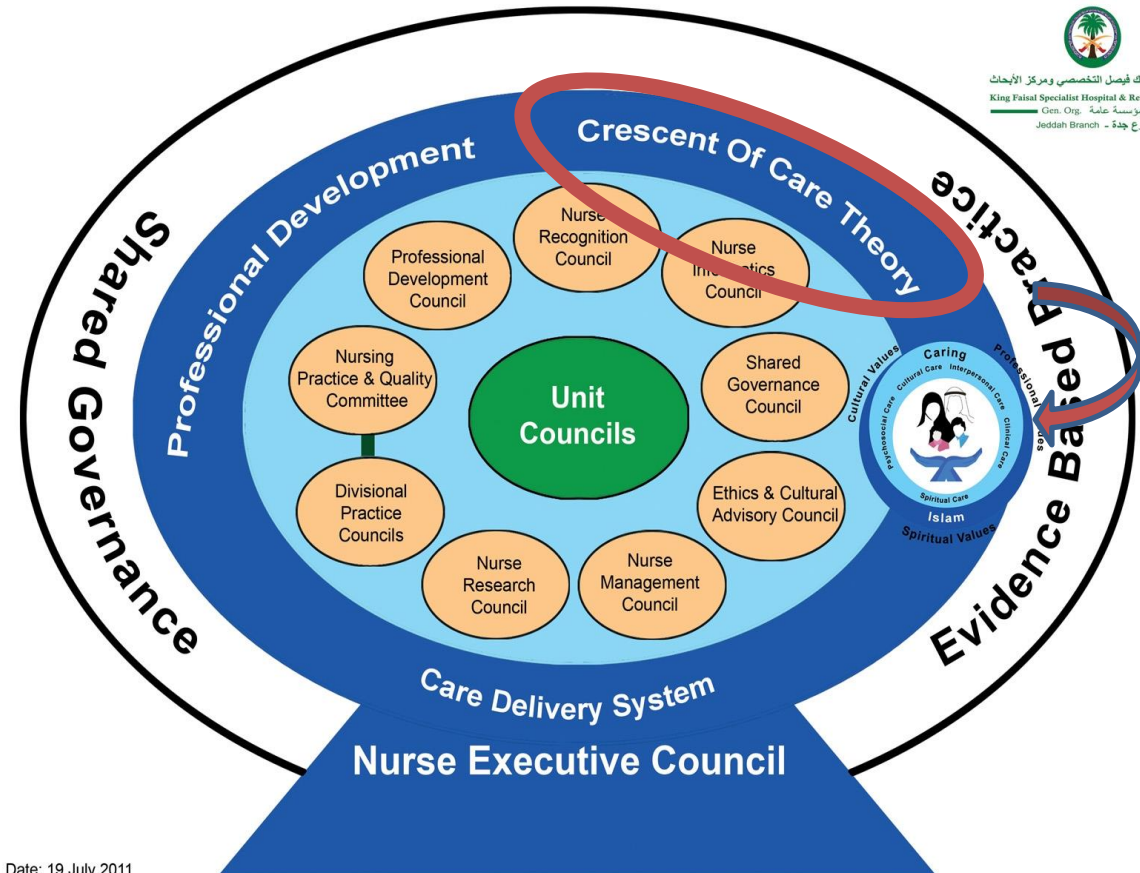
INTERNATIONAL DISSEMINATION & VALIDATION

2012 - 2018

2012 - 2018



Professional Practice Model



Professional Practice Model

Date: 19 July 2011
Approved: NEC

Signature:

Begin
Magnet
Journey

2006

Defined
the PPM

2007 - 2008

Selected
COCM

2009

COCM Model
Development

2010 - 2012

Core Group
2013 - present

2013 - present

Crescent of Care Model (COCM®)

Core Group

Research

- ◉ Arab Muslim nurses' experiences of the meaning of caring (2008), *Dr. Sandy Lovering*
- ◉ Implementing the Crescent of Care Nursing Model (2010 – 2012)



Model Development & Application

- ◉ Knowledge development
- ◉ Education
- ◉ Resource development
- ◉ Research

What does the bedside nurse need to know?

Implementation of the COCM©:

Hospital – Organizational and Unit Level Educational Strategies and Practice Application



General Nursing Orientation

Phase 1

- Education Calendar (2010)

Phase 2

- General Nursing Orientation (2011)

Phase 3

- Workshop Restructure (2017)



Impact of Culture on Patient Education

FADI AL-SHATARAT, BSc.Nurs, RN, CM
Education Coordinator

MYSSA SALAMA, RN, BSN, CCS
Clinical Instructor

OSAMA AL-DIB'I, RN,MSN
Clinical Instructor

Nursing Development & Saudization

King Faisal Specialist Hospital & Research Center (Gen.Org.) Jeddah Branch

Living COCM© Education Programs






Living COCM© Awareness Days

Living COCM© Practice Changes

Spiritual Caring Action

Cultural Caring Action



Hejama



Hijab

Living COCM© Practice Changes

**Psychosocial Caring:
Working through the Family**



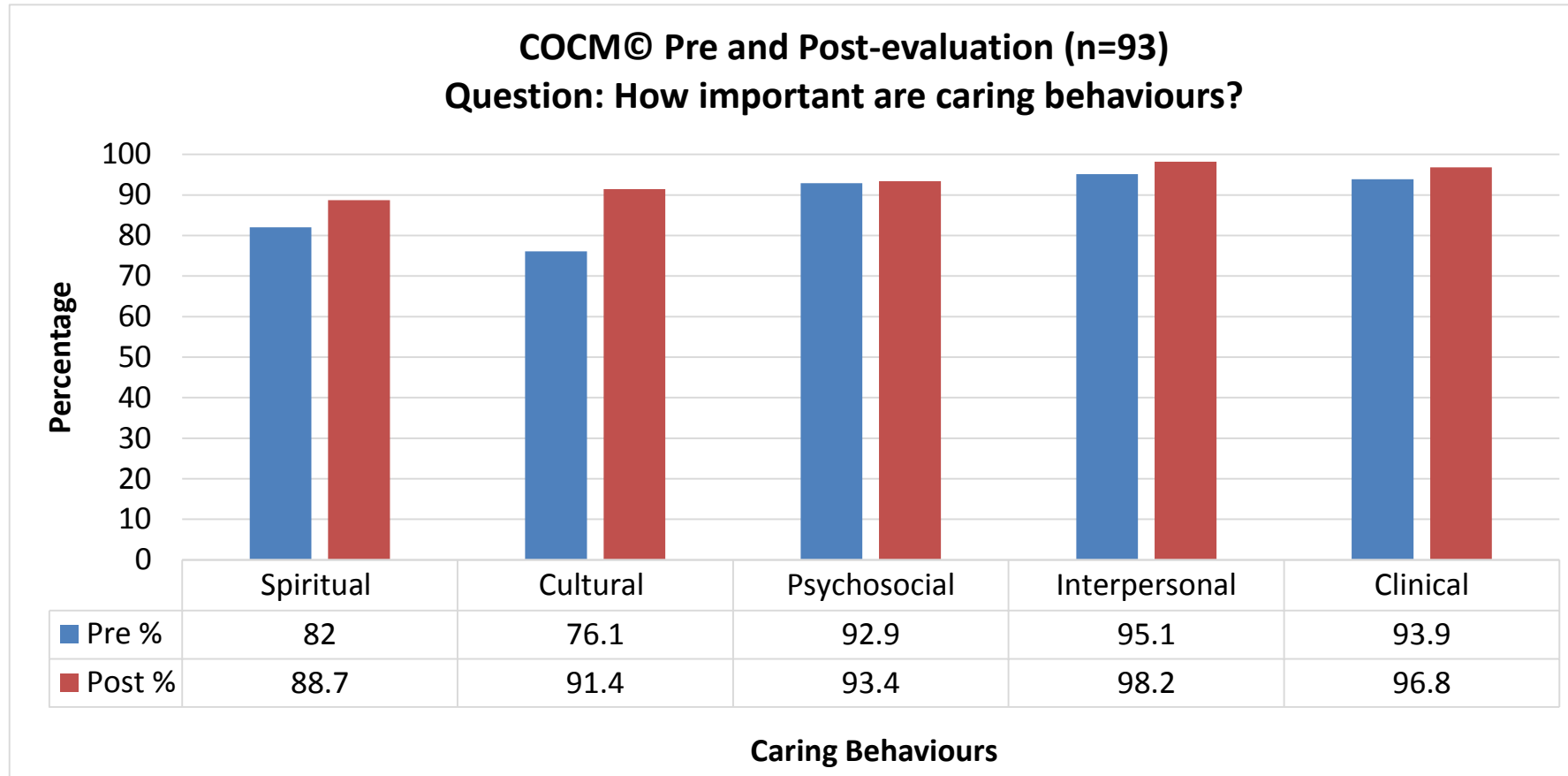
**Clinical Caring:
Care during Ramadan**



Evaluation of the COCM©: Education Strategy Application within the PPM



GNO Workshop Evaluation: 2013



p=0.05 Pre- and Post Workshop

Most significant in SPIRITUAL & CULTURAL COMPONENTS

GNO Workshop Evaluation: Focus Group Findings (2017)

	Cultural Competence	Cross Cultural Communication
New Hires (less than 5 months)	<ul style="list-style-type: none">-Prepared for Saudi culture- Issues with understanding colleagues' culture leading to conflict	<ul style="list-style-type: none">- Used others for Arabic translation- Learned Arabic words for caring
Experienced nurses (5-20 years)	<ul style="list-style-type: none">-Applied new knowledge within practice- More confident in dealing with families, complex situations	<ul style="list-style-type: none">- Incorporated cultural assessment into care planning and working with families

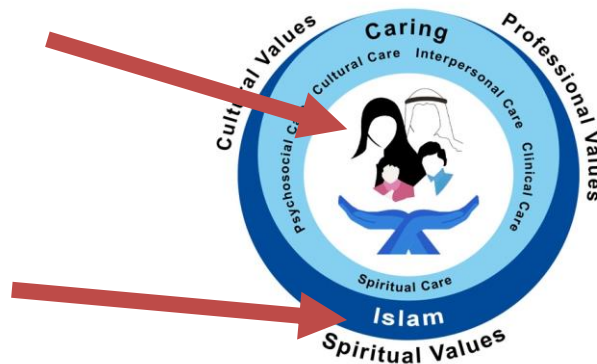
Evaluation of Professional Practice Model (2016)

What percentage of RN's.....	Percentage Respondents
Give care according to patient and family cultural caring needs e.g. gives gender specific care, accommodates visitor needs, involves family in care decisions?	87 %
Give care according to patient/family spiritual caring needs e.g. accommodates prayer before procedures, use of the word Bisma'Allah, modifies care routines for patients during fasting?	86 %
Use the Crescent of Care nursing model in patient and family assessment and daily care planning?	80 %

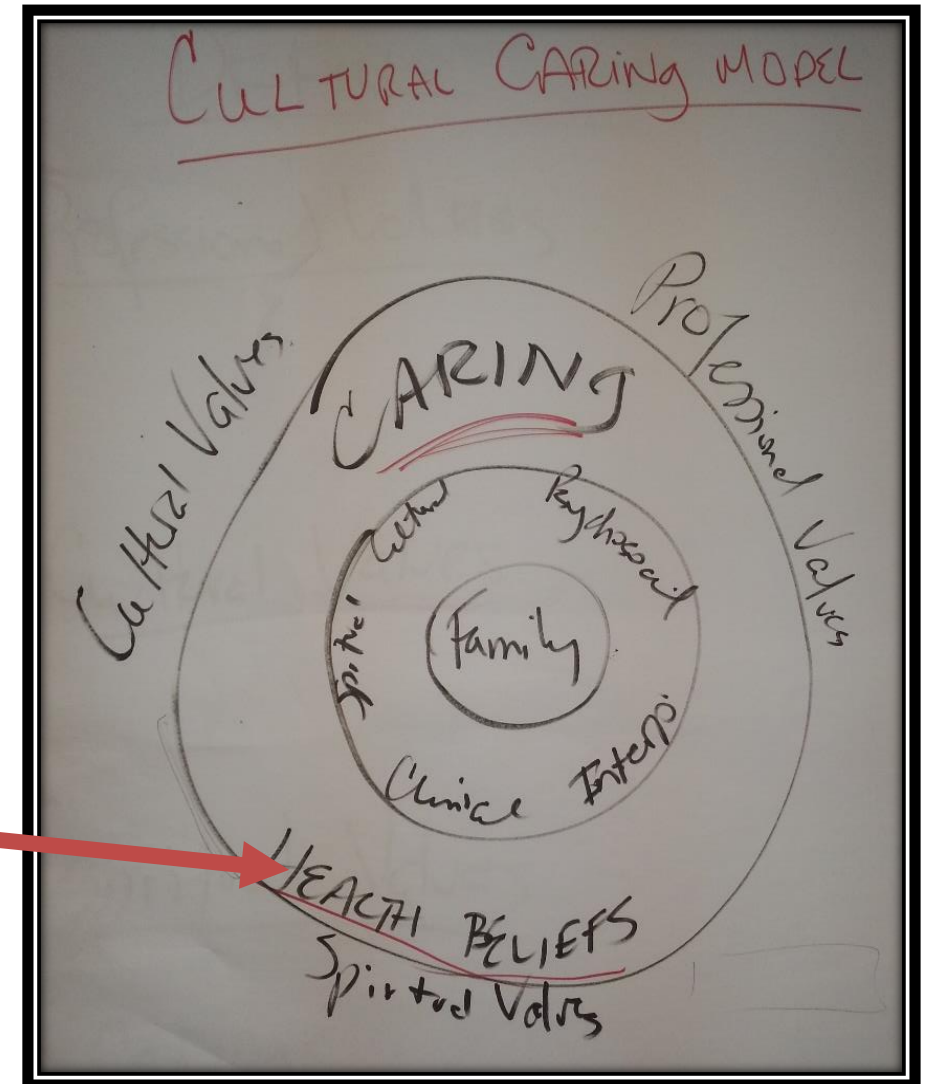
COCCM© within Multicultural Context



UNITED ARAB EMIRATES
MINISTRY OF HEALTH CNOs



“CULTURAL CARING MODEL”



Future Directions



References

- Lovering, S. (2012). The Crescent of Care: A nursing model to guide the care of Arab Muslim patients. *Diversity and Equality in Health and Care*, 9 (171-178).
- Lovering, S. (2014). The Crescent of Care: A nursing model to guide the care of Muslim patients. In G. H. Rassool (Ed.), *Cultural competence: Caring for Muslim patients* (pp. 104-120). London: Palgrave Publ.
- Crescent of Care Website <http://www.crescentofcare.com/>
crescentofcare@gmail.com



Contact Information

- Sandy Lovering, DHSc RN, CTN-A, FAAN, Executive Director, Nursing Affairs

Email: Slovering@kfshrc.edu.sa

- Al-Anoud Abu-Alsaud, MScN RN, Head Nurse, 5South Medicine

Email: aabualsaud@kfshrc.edu.sa

